

SMLR Type

SMLR switches are the smallest and most compact of all lever type switches available. They are classed in the sub-miniature category and were designed for multi-circuit applications where space is an important factor. In spite of their smallness in size the design in this series ensures a rugged and accurate construction. They are available as either 2, 3 or 4 position switches and employ standard 8SM or 12SM stators in their construction. Electrical contacts are available in all but a few locations on the rear side of the wafer section making available a greater selection of electrical circuits. SMLR switches can also be assembled with multi-wafer sections per switch driven by a common shaft. They are adaptable for commercial or government applications and can be furnished to either specification.

Specifications

Size

1.469

Mounting

Lever

.187 or .125

Stator Insulation

Glass epoxy or Phenolic

Rotor Insulation

Glass epoxy or Phenolic

Section Thickness

.062

Contacts

Silver-plated brass or silver alloy

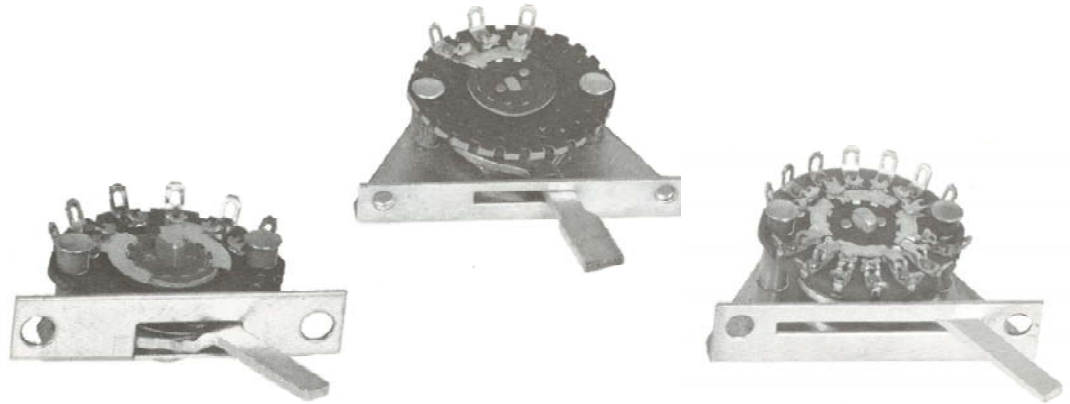
Contact Resistance

.002 ohms between adjacent clips

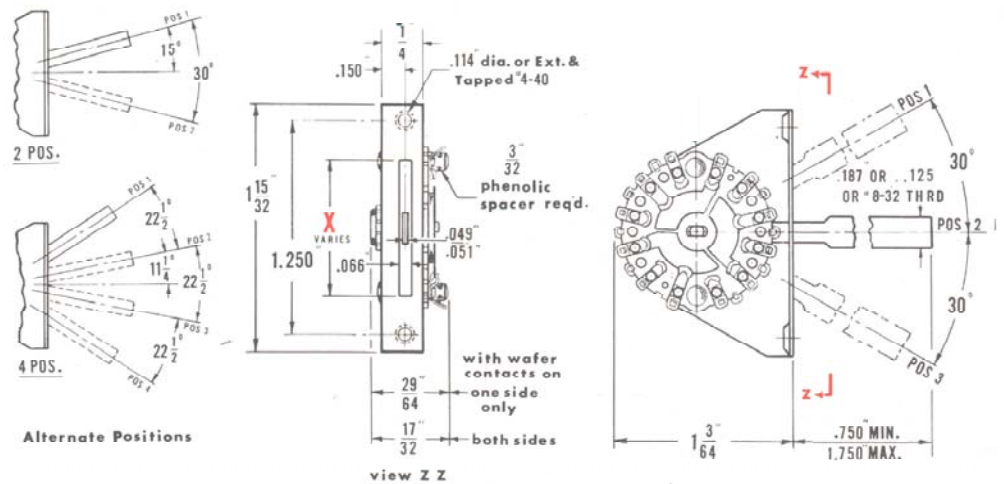
Electrical Rating

.17A @ 115 VAC

.550A @ 28 VDC



SMLR Type Drawing



SMLR Type Switch Assemblies

Positions	MAXIMUM SWITCHING PER SECTION		Type 1300LR	
	Type 328LR and Type 250LR 30° Index	22-1/2° Index	30° Index	22-1/2° Index
2	6 Poles	-	4 Poles	-
3	4 Poles	-	3 Poles	-
4	-	2 Poles	-	1 Pole

SMLR Type

